



# **Bluetooth® Stereo Transmitter**

## **BT450Tx Quick Setup Guide**

<b>Index</b>	<b>Page</b>
<b>English</b> .....	<b>2</b>
<b>Francais</b> .....	<b>5</b>
<b>Deutsch</b> .....	<b>8</b>
<b>Italiano</b> .....	<b>11</b>
<b>Espanol</b> .....	<b>14</b>
<b>Русский</b> .....	<b>17</b>
<b>日本語</b> .....	<b>20</b>
<b>繁體中文</b> .....	<b>23</b>

### **Trademarks**

"Bluetake" name and logo are trademarks of Bluetake Technology Co., Ltd. "Bluetooth" word mark and logos are owned by the Bluetooth SIG, Inc. and any use of such marks by Bluetake Technology Co., Ltd. is under license. "Apple", "Mac", "Mac OS" and "iPod" word marks and logos are registered trademarks of Apple Computer, Inc.

### **Copyrights**

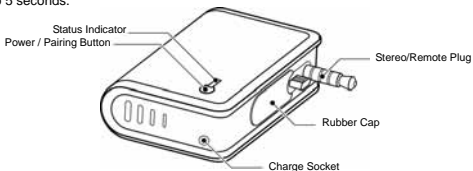
© Copyright 2005 Bluetake Technology Co., Ltd. All Rights Reserved.

**[ Turning On/Off ]**

< If this is the first time you use the Bluetooth stereo transmitter BT450Tx, please refer to the next lesson to **FULLY** charge the devices in advance. >

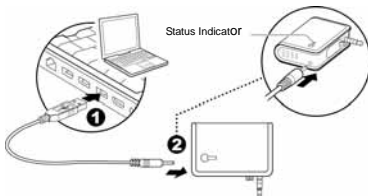
**Turn On:** Press and hold the Power/Pairing Button until the Status Indicator flashes Blue. The holding duration is approximate to 2 seconds.

**Turn Off:** Press and hold the Power/Pairing Button until the Status Indicator flashes Red. The holding duration is approximate to 5 seconds.

**[ Charging ]**

**Step-1:** Please make sure the computer is on with power supply in advance, and then plug the USB Power Cable into the USB socket of computer.

**Step-2:** Plug the pipe-shaped terminal of the USB Power Cable into the charge socket of stereo transmitter directly.



## BLUETOOTH STEREO TRANSMITTER – QUICK SETUP GUIDE



### Notice:

- DO NOT use the USB Power Cable with your electronic appliances except the Bluetooth stereo transmitter.
- Please charge the stereo transmitter singly because the computer's USB power output current is weak to charge both the devices simultaneously.
- The actual USB power charging time may vary due to the different computers due to the USB output current of every computer may be different.

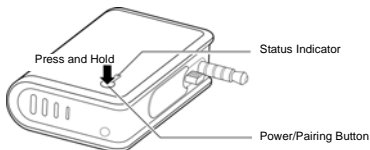
Function	Status Indicator
Turn on / Active	Blinking Blue
Pairing Mode	Red / Blue alternately
Low Battery	Blinking Red
Charging Mode	Constant Red
Fully Charged	Constant Blue

### [ Pairing ]

**Step-1:** Turn off both the i-PHONO mini headphone and stereo transmitter in advance, and then put the i-PHONO mini headphone in the pairing mode.

**Step-2:** Afterward, put the stereo transmitter in the pairing mode. Press and hold the stereo transmitter's Power/Pairing Button until its Status Indicator flashes Blue and Red alternately.

**Step-3:** Once the stereo transmitter is putting in the pairing mode, it will begin to search and pair with the headphone automatically. After the pairing is completed, both the devices' Status Indicators will flash Blue regularly.



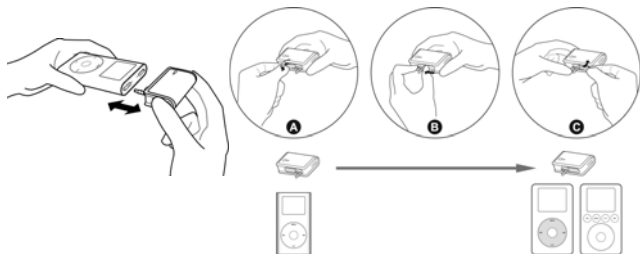
### Notice:

- Please go to <http://www.bluetake.com/products/BT450Rx.htm> to know more information about i-PHONO mini headphone.

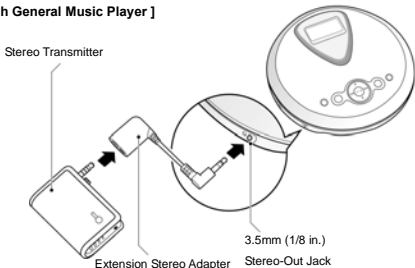
### [ Install Bluetooth Stereo Transmitter with i-Pod ]

**Step-1:** Consult the following figure to adjust the Remote/Stereo Plug of i-PHONO mini stereo transmitter to the proper position for fitting your iPod.

**Step-2:** Consult the following figure to plug the Remote/Stereo Plug of i-PHONO mini stereo transmitter to the iPod remote and headphone ports.

**[ Using Bluetooth Stereo Transmitter with General Music Player ]**

You can enjoy the stereo music transmitted wirelessly from the music player which is installed the i-PHONO mini Bluetooth Stereo Transmitter (P/N: BT450Tx), the music player can be a CD Player, MP3 Player, Mini Hi-Fi system, Handheld Game Console, Portable Media Player, Non-Bluetooth supported computer, etc.



**Step-1:** Pair the i-PHONO mini headphone with the stereo transmitter in advance.

**Step-2:** Install the stereo transmitter to the music player. The installation is effortless and no driver or software is necessary. You only need to connect the stereo transmitter with its exclusive Extension Stereo Adapter, and then connect the Extension Stereo Adapter to the 3.5mm (1/8 in.) stereo out jack of the music player.

**Step-3:** Play Music.