



Bluetooth® Stereo Dongle
BT430Tx Quick Setup Guide

Index

Page

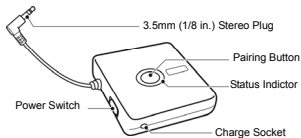
English **2**

Trademarks

"Bluetake" name and logo are trademarks of Bluetake Technology Co., Ltd. "Bluetooth" word mark and logos are owned by the Bluetooth SIG, Inc. and any use of such marks by Bluetake Technology Co., Ltd. is under license.

Copyrights

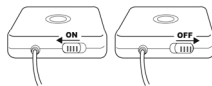
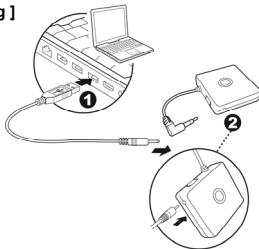
© Copyright 2005 Bluetake Technology Co., Ltd. All Rights Reserved.

[Turn On / Off]


< If this is the first time you use the i-PHONO PLUS Bluetooth Stereo Dongle (P/N: BT430Tx), please refer to the next lesson to **FULLY** charge the device in advance. >

Turn On / Off:

Sliding the power switch to turn on / off the i-PHONO PLUS Stereo Dongle.


[Charging]


Step-1: Please make sure the computer is on with power supply in advance, and then plug the USB Power Cable included in the BT430Tx retail package into the USB socket of the laptop or desktop.

Step-2: Plug the pipe-shaped terminal of the USB Power Cable into charge socket of the stereo dongle directly.

Function	Pairing Button	Status Indicator
Turn on / Active	-	Blinking Blue
Pairing mode	Press and Hold for 3 sec.	Red/Blue alternately
Low Battery	-	Blinking Red every 3 sec.
Charging	-	Constant Red
Note: When the stereo dongle fully charged, the status indicator will switch off all light.		

Notice:

- DO NOT use the USB Power Cable with your electronic appliances except the Bluetooth stereo dongle.
- Please charge the stereo dongle singly because the computer's USB power output current is weak to charge both the devices simultaneously.
- The actual USB power charging time may vary due to the different computers due to the USB output current of every computer may be different.

[Pairing]

Step-1: Turn off both the stereo dongle and the headphone (i-PHONO mini headphone or i-PHONO PLUS headphone) in advance, and then put the headphone in the pairing mode.

Step-2: Afterward, put the stereo dongle in the pairing mode. Press and hold the Power/Pairing Button of stereo dongle until its Status Indicator flashes Blue and Red alternately.

Step-3: Once the stereo dongle is putting in the pairing mode, it will begin to search and pair with the headphone automatically. After the pairing is completed, both the Status Indicators of headphone and stereo will flash Blue regularly.

Notice:

- Please go to <http://www.bluetake.com/products/BT450Rx.htm> to know more information about i-PHONO mini headphone.
- Please go to <http://www.bluetake.com/products/BT420Rx.htm> to know more information about i-PHONO PLUS headphone.

[Using Bluetooth Stereo Dongle with General Music Player]

You can enjoy the stereo music transmitted wirelessly from the music player which is installed the i-PHONO PLUS Bluetooth Stereo Dongle (P/N: BT430Tx), the music player can be a CD Player, MP3 Player, Mini Hi-Fi system, Handheld Game Console, Portable Media Player, Non-Bluetooth supported computer, etc.

Step-1: Pair the stereo dongle with the stereo headphone (i-PHONO mini headphone or i-PHONO PLUS headphone) in advance.

Step-2: Install the stereo dongle to the music player. The installation is effortless and no driver or software is necessary. You only need to connect the Stereo Plug of the i-PHONO PLUS stereo dongle to the 3.5mm (1/8 in.) stereo out jack of the music player.

Step-3: Play Music.

