

Using with the Bluetooth-enabled Computer

You can use the i-PHONO PLUS headphone's stereo (A2DP) and remote control (AVRCP) functions with the Bluetooth-enabled computer which answers the following requirements:

- Windows XP O.S.
- Both Bluetooth hardware (embedded chipset or USB adapter) and software support A2DP (Advanced Audio Distribution Profile) and AVRCP (Audio Video Remote Control Profile)

The following instruction used BLUETAKE BT007Si Bluetooth USB Adapter and IVT BlueSoleil Bluetooth Software v1.6.1.4 to demonstrate the general procedure.

<Pairing>

Step-1: Follow "Pairing" procedure to put the i-PHONO PLUS headphone in the pairing mode. (page14)

Step-2: Open the Bluetooth software and search the i-PHONO PLUS headphone. Then, you will find out a headphone (headset) icon named "**iPHONO PLUS**". Select the device to pair with the computer.

Step-3: Afterward a dialogue box will prompt you for a passkey or PIN. Enter **0000** (a sequence of four zeros) in the dialog box and then click on "OK" or "Confirm". After the pairing is completed, the headphone (headset) icon will be marked.

Step-4: Double click on the marked headphone (headset) icon, and then you can discover the Bluetooth service (function) provided by the i-PHONO PLUS headphone.

Step-5: Connect the computer with the headphone by double-clicking on the A2DP icon which is usually named "Bluetooth AV Service", "A2DPsink" or "Audio Sink".

After the connection is established, the headphone (headset) icon's color or figure will be changed in the Bluetooth software window and the Status Indicator of headphone will flash Blue regularly.

Now, the i-PHONO PLUS headphone is ready to apply the stereo wireless transmission with the paired computer. Thereafter, you only need to follow up the instruction from **Step-4** if you want to operate the same application.



< Listen to Music and Player Remote Control >

After you connected the i-PHONO PLUS headphone with the paired computer via the Bluetooth AV service (A2DP), you can enjoy the stereo music transmitted from the computer wirelessly.

Step-1: Make sure the i-PHONO PLUS headphone is connected with the computer via Bluetooth AV service (A2DP).

Step-2: Open the media application program such as Windows Media Player, and then select media files to play.

If there is no sound emitted from the headphone while the music is playing, please close the media application program and open “Control Panel” of the Windows system, and then double-click on “Sounds and Audio Devices” icon. Please make sure that “Bluetooth AV/HS Audio”, “Bluetooth High Quality Audio” or “Bluetooth Wave from TOSHIBA” is selected for “Sound Playback” under the “Audio” tab in “Sounds and Audio Devices Properties” window. Afterward, please open the media application program to play the media files again.



Step-3: If the used media application program is Windows Media Player; you can remote control the music playing from the connected i-PHONO PLUS headphone.

Player Function	+/- Volume Button
Volume Up / Down	Press “+ / -” once per level
Next	Press “+” and Hold for 2 sec.
Previous	Press “-” and Hold for 2 sec.

Player Function	Multi-functional Button
Play / Pause	Press Once

Notice:

- The Bluetooth software and stacks you used must support Bluetooth A2DP and AVRCP.
- The remote control functions can be applied to Windows Media Player 9 or later versions and might be unavailable for other media application programs.
- The music streaming may be interrupted or interfered if another Bluetooth device is connected with the computer at the same time. Only connect the headphone with the computer can keep the music streaming quality.
- If the headphone is distant from the computer, or if there are some metal obstructions in-between, the music streaming may be interrupted or interfered.
- After you connected the headphone with the computer at the first time, please adjust the headphone volume up due to the initial volume of the headphone volume is

minimum.

< Internet Messenger/Chatting Application >

You can use the i-PHONO PLUS headphone's mono headset (HSP) functions with the Bluetooth-enabled computer which answers the following requirements:

- Windows XP/2000 O.S.
- Internet Messenger/Chatting Application such as Skype, MSN Messenger, Yahoo! Messenger, etc.
- Both Bluetooth hardware (embedded chipset or USB adapter) and software support HSP (Headset Profile).

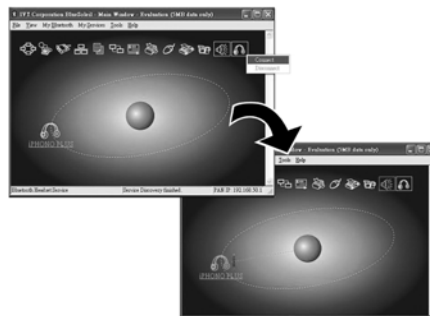
The following instruction used BLUETAKE BT007Si Bluetooth USB Adapter and IVT BlueSoleil Bluetooth Software v1.6.1.4 to demonstrate the general procedure.

For Pairing the headphone with the computer, please refer to <Pairing> Step-1 to Step-3. (page17)

Step-4: Double click on the marked headphone (headset) icon, and then you can discover the Bluetooth service (function) provided by the i-PHONO PLUS headphone.

Step-5: Connect the computer to the headphone by double-clicking on the headset icon which is usually named "Bluetooth Headset Service" or "Headset". If the service has been properly detected, the i-PHONO PLUS headphone is being called, and the default ring tone will be emitted from the headphone. Please press the headphone's Multi-functional Button to answer while you're hearing the ring tone.

After the connection is established, the headphone (headset) icon's color or figure will be changed in the Bluetooth software window and the Status Indicator of headphone will flash Blue regularly.

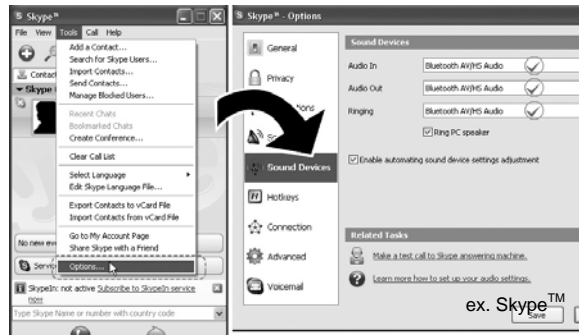


Step-6: Open the Internet messenger program such as Skype, MSN Messenger, Yahoo! Messenger, etc.

If there is no sound emitted from the i-PHONO PLUS headphone while the conversation is beginning, please close the Internet messenger program and open "Control Panel" of the Windows system, and then double-click on "Sounds and Audio Devices" icon. Please make sure that "Bluetooth AV/HS Audio", "Bluetooth Audio" or "Bluetooth Wave from TOSHIBA" is selected for "Sound Playback" and "Sound Recording" under the "Audio" tab in "Sounds and Audio Devices Properties" window. Afterward, please open the Internet messenger program again.



Step-7: Make sure that “**Bluetooth AV/HSP Audio**”, “**Bluetooth Audio**” or “**Bluetooth Wave from TOSHIBA**” is selected for speaker and microphone settings of the Internet messenger program you used. Afterward the i-PHONO PLUS headphone is ready to be used with the Internet messenger program.



Notice:

- The Bluetooth software and stacks you used must support Bluetooth HSP.
- The mono headset (HSP) functions cannot be used with the stereo functions (A2DP) simultaneously. It means that if you have connected the headphone with the computer for stereo applications, it's impossible to use it for the Internet messenger program at the same time.
- If the headphone is distant from the computer, or if there are some metal obstructions in-between, or if the Internet bandwidth is narrow, the conversation quality may be poor.
- After you connected the headphone with the computer at the first time, please adjust the headphone volume up due to the initial volume of the headphone volume is minimum.