

Object Push

Note:

Please read "BlueSoleil Fundamental" document before you start to operate all applications introduced in this instruction.

The Bluetooth Object Push Profile (OPP) enables users to send and receive Personal Information Management (PIM) data objects (including messages, notes, calendar items, and business cards) to and from a Bluetooth enabled PDA or mobile phone. The objects supported include:

- Contacts (*.vcf)
- Calendar items (*.vcs)
- Notes (*.vnt)
- Messages (*.vmg)

Typical Usage

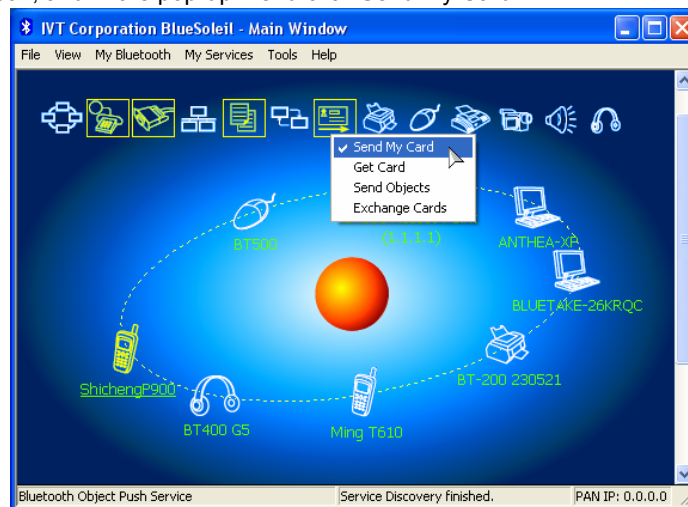
- Push objects to a Bluetooth enabled mobile phone or PDA
- Receive objects from a Bluetooth enabled mobile phone or PDA

Note: If you would like to push PIM objects to a PDA, make sure that the PDA is ready to receive a PIM object before you start. If necessary, enable Object Push on the PDA. For instructions, refer the PDA's user documentation.

- Push Objects to a Bluetooth Enabled Mobile Phone

There are two methods to push objects:

Method 1: From BlueSoleil Main Window: Double-click on the mobile phone or PDA icon to browse for service information. The Object Push Service icon should be highlighted at the top of the screen. Right click the Object Push Service icon, and in the pop-up menu click Send My Card.



Send My Card:

Send your default business card.

Get Card:

Get the phone's default business card.

Send Objects:

Select objects (PIM files ending in .vcf, .vcs, .vnt, or .vmg) and send them to the phone.

Exchange cards:

Have your computer and the phone to exchange their default business cards.

Method 2: From MS Outlook:

(1) Select the contact that you would like to send.

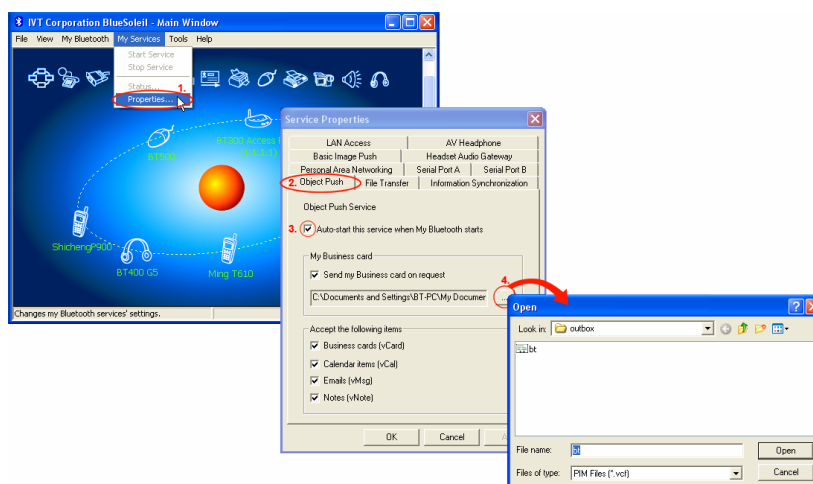
(2) In Outlook, click on the Push button on the toolbar, or click *File | Push*.

Object Push

(3) The Bluetooth Neighbors screen will appear. In the device list, select the phone or PDA that you wish to push the contact to. Click on the Push button.

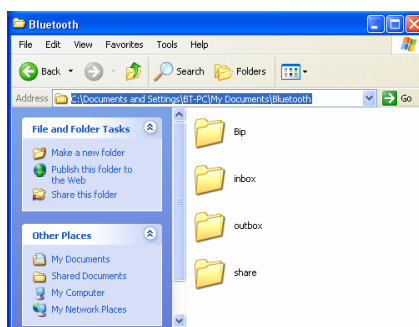
- Receive Objects from a Bluetooth Enabled Mobile Phone

- Step 1: Configure the parameters for the object push. From the Main Window, click *My Services | Properties*. Click on the Object Push tab.
- Step 2: Start the Object Push service, following the instructions in [BlueSoleil Fundamental]. Do not initiate a connection, only start the service so that your computer will be ready to receive objects.
- Step 3: Send objects from the phone. For instructions, refer to your phone's user documentation.



Notes:

BlueSoleil creates a Bluetooth folder (with Inbox and Outbox subfolders) in your My Documents folder for use with Object Push. The Inbox is used to save objects received from other devices. The Outbox is used to save objects sent out from your computer.



- You can set your default business card by clicking *My Services | Object Push*. In the Send My Business Card field, browse to select a contact as your default business card.