

Printer

Note:

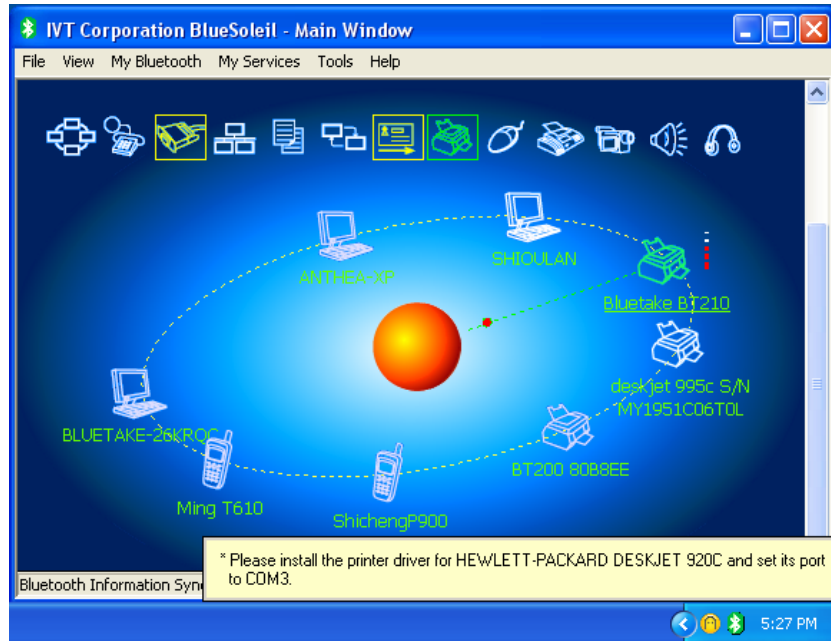
Please read "BlueSoleil Fundamental" document before you start to operate all applications introduced in this instruction.

The Bluetooth Printer Profile (HCRP) enables your computer to connect to a Bluetooth enabled printer.

Typical Usage

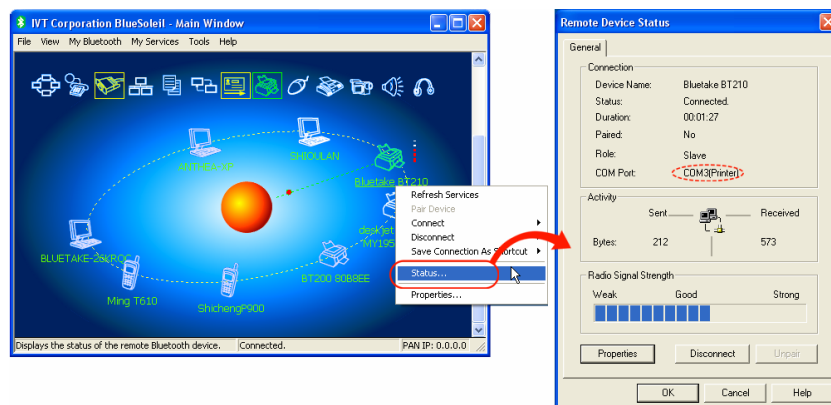
- Print documents on a Bluetooth enabled Printer.

Step 1: Connect to the printer's printer service.



(a) If your computer does not have the correct printer drivers installed, BlueSoleil will prompt you to do so.

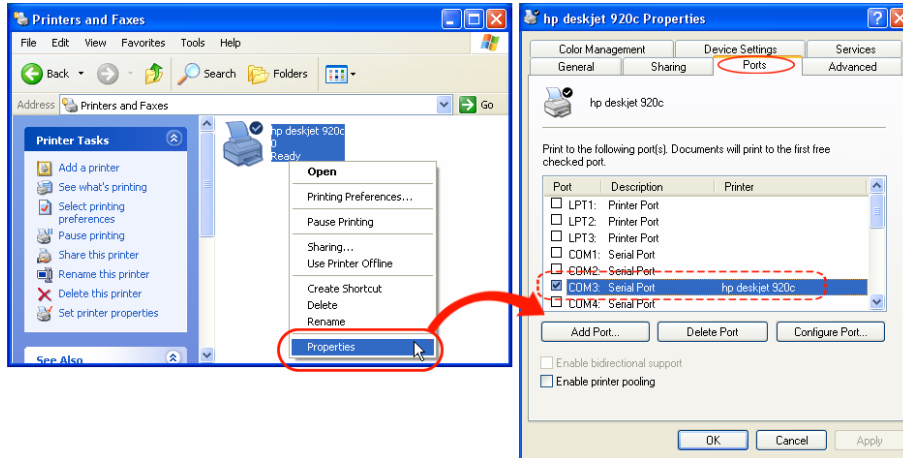
Install the driver for the printer, and remember to set the printer port to the correct COM port number. To determine the correct COM port number, in the Main Window, right-click on the device icon. In the pop-up menu, select Status.



(b) If the printer driver has been installed, a message indicates that the printer is ready.

Printer

Step 2: Print documents using the Bluetooth enabled printer. In the application, be sure to select the correct printer and printer port.



Notes:

The COM port used by the Bluetooth enabled printer may be different from this instruction depends on the actual computer system configurations.