

Dial-up Networking

Note:

Please read "BlueSoleil Fundamental" document before you start to operate all applications introduced in this instruction.

The Bluetooth Dial-up Networking (DUN) Profile enables users to wirelessly dial-up to the Internet through a Bluetooth enabled modem or mobile phone that supports the DUN Profile.

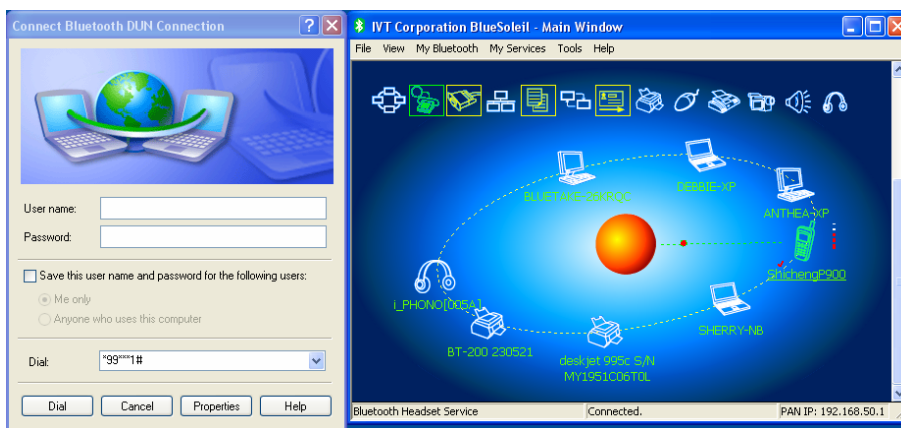
Typical Usage

- Dial-up to the Internet via a Bluetooth enabled mobile phone.
- Dial-up to the Internet via a Bluetooth enabled modem.
- Dial-up to the Internet via a Bluetooth enabled mobile phone.

Step 1: Connect to the phone's Dial-Up Networking Service, following the instructions in [BlueSoleil Fundamental].

Step 2: The Dial-Up Dialog will appear. Enter the dial-up number, User name, and Password. Make sure the correct dial-up number is entered, then click on the Dial button.

Note: The default dial-up number *99***1# only works with certain GPRS phones and service providers in the United States. If necessary, enter the correct dial-up number for your Internet Service Provider (ISP).



Note: After you successfully connect, you can also select **Save Connection As Shortcuts** to create a desktop dial-up shortcut. This would allow you to conveniently dial up and connect by simply clicking on the shortcut, without having to manually start BlueSoleil.

- Dial-up to the Internet via a Bluetooth enabled modem.

Step 1: Connect to the modem's Dial-Up Networking Service, following the instructions in [BlueSoleil Fundamental].

Step 2: The Dial-Up Dialog will appear. Enter the dial-up number, User name, and Password. Enter the correct dial-up number, then click on the Dial button.

Note: The default dial-up number *99***1# does NOT work with modems. You need to enter the correct dial-up number for your Internet Service Provider (ISP).

Step 3: Use your email, Internet browsing or other application that utilizes a dial-up connection.