

# Basic Imaging

**Note:**

Please read "BlueSoleil Fundamental" document before you start to operate all applications introduced in this instruction.

The Basic Imaging Profile (BIP) enables users to receive pictures from a Bluetooth enabled digital camera, mobile phone, or other compatible device. It also enables remote control of shooting, display, and other imaging functions.

**Typical Usage**

- Control camera to take pictures
- Receive pictures sent from BIP-enabled digital devices
- Control Camera to Take Pictures

Step 1: Connect to the camera, following the directions in [ BlueSoleil Fundamental ].  
A Bluetooth Camera Controller will appear, Figure 4.1.

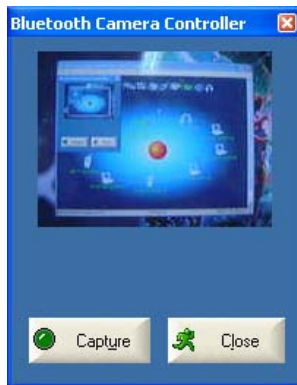


Figure 4.1 Bluetooth Camera Controller

Step 2: Click the button to capture the image. The captured image will be transmitted to your computer and displayed.

- Receive Pictures

Step 1: Assign the directory where you would like to save image files pushed from the client device. Click My Services | Properties. Click on the Basic Image Push tab. In the Set the image directory field, browse to select the file location. Click OK.

Step 2: Start the BIP service, following the directions in [ BlueSoleil Fundamental ].

Step 3: Send pictures from the remote device. For instructions, refer to the user documentation for the remote device.